

**FIRE-RATED JOINT THROUGH CONCRETE WALL ASSEMBLY**

ASSEMBLY RATING = 2-HR.

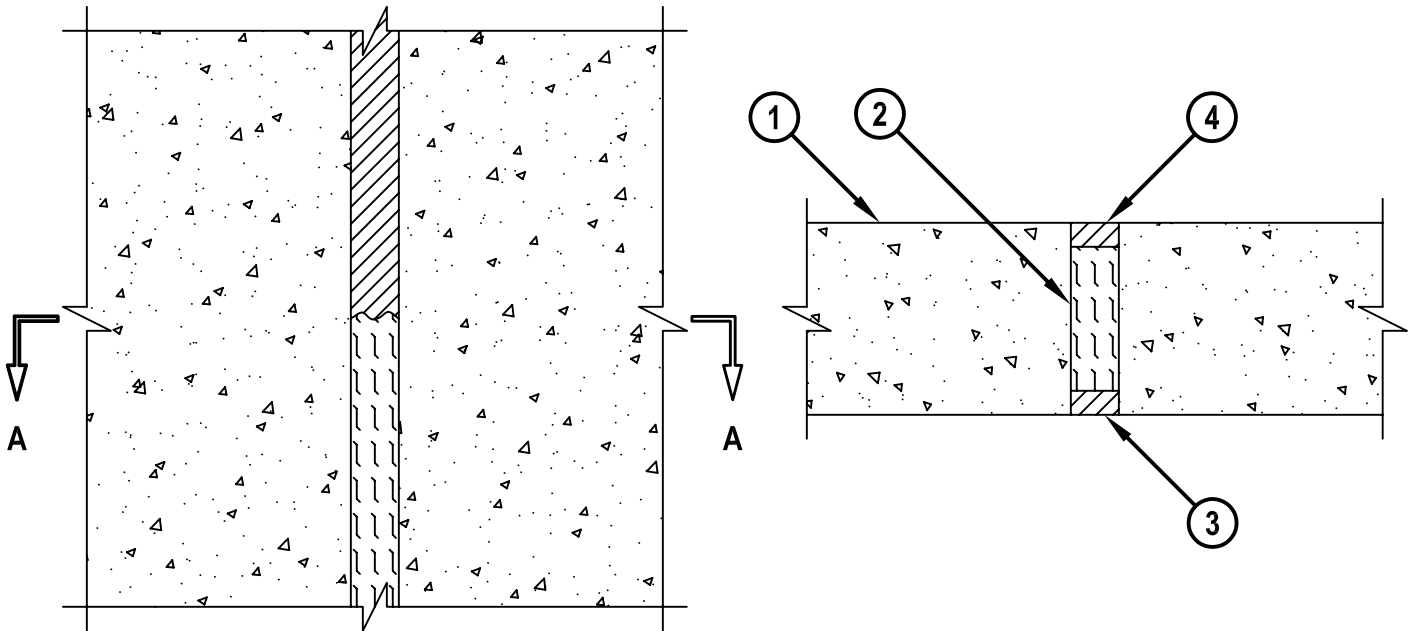
L-RATING AT AMBIENT = LESS THAN 1 CFM/LINEAR FT.

L-RATING AT 400° F = LESS THAN 1 CFM/LINEAR FT.

WWS0042b.021803

**FRONT VIEW**

**SECTION A-A**



1. CONCRETE WALL ASSEMBLY (2-HR. FIRE-RATING) :
  - A. LIGHTWEIGHT OR NORMAL WEIGHT CONCRETE WALL (MIN. 4" THICK).
  - B. ANY UL/ULC CLASSIFIED CONCRETE BLOCK WALL.
2. MINIMUM 3" THICKNESS MINERAL WOOL (MIN. 4 PCF DENSITY) TIGHTLY PACKED.
3. MINIMUM 1/2" DEPTH OF ANY OF THE FOLLOWING FIRESTOP SEALANTS APPLIED TO EXTERIOR OF WALL :
  - A. 790 OF 795 SEALANT MANUFACTURED BY DOW CORNING CORP.
  - B. PENSIL 300 SEALANT MANUFACTURED BY GENERAL ELECTRIC SILICONE PRODUCTS DIVISION.
  - C. DYNATROL II CAULK, OR 864 SILICONE CAULK MANUFACTURED BY PECORA CORP.
4. MINIMUM 1/2" DEPTH HILTI CP 601S ELASTOMERIC FIRESTOP SEALANT OR CP 606 FLEXIBLE FIRESTOP SEALANT APPLIED TO INTERIOR OF WALL.

**NOTE : MAXIMUM WIDTH OF JOINT = 1".**



HILTI, Inc.  
Tulsa, Oklahoma USA (918) 252-6000

Sheet	1 of 1
Scale	1/4" = 1"
Date	Feb. 18, 2003

Drawing No.  
**WWS  
0042b**