

Innovations



Fast installation

- Round openings can be created via hole saws or core bits
- “Spin on” flanges promote fast product installation



Fast cable installation

- Cables do not need to be inserted in a uniform height to comply with the firestop detail installation



Easy penetration and re-penetration

- Opening and closing the device is easy and intuitive: from one side of the CP 653, depress the red tabs and twist the inner housing



Extremely low L-ratings

- Constrictive smoke seal limits smoke migration:
 - Less than 1 cfm/ft² for empty device
 - 5 cfm/ft² possible for cable bundles



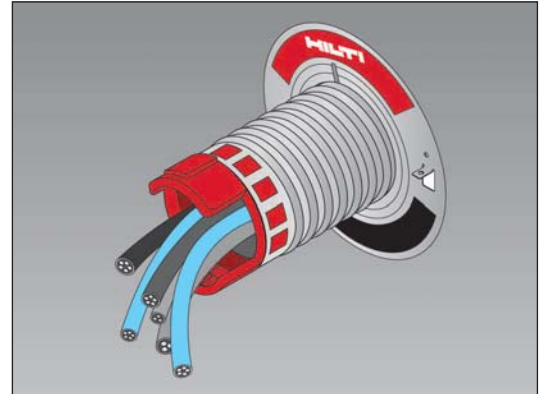
Withstands the rigors of usage and time

- Robust smoke seal fabric tested to 250 open-close cycles

When easy or quick aren't good enough.

Healthcare managers, telecom and datacom professionals, and electrical trades understand the importance of life safety and asset preservation. When selecting the correct cable management device, they know the right product

addresses a multitude of performance criteria. These aspects include fast product installation, ease of cable penetration and re-penetration, superior ability to limit smoke migration whether empty or 100% visual-fill, a wide portfolio of firestop details, and a robust, lightweight solution that endures long-term, high-traffic usage. The Hilti CP 653 Speed Sleeve is a ready-to-use, one-step cable management firestop device that addresses all of these needs.



Ordering Information

| Item No. | Description | Qty |
|----------|------------------------|-----|
| 236323 | CP 653 2" Speed Sleeve | 1 |
| 236324 | CP 653 4" Speed Sleeve | 1 |



CP 653 Technical Data

| Device | OD (device only) | OD (flange) | ID | Total length | Weight (device and flanges) |
|--------------------------------|------------------|--------------------------------|--------|--------------|-----------------------------|
| 2" | 2.3 in | 4.7 in | 1.7 in | 12.4 in | 1.5 lbs |
| 4" | 4.3 in | 6.7 in | 3.7 in | 12.4 in | 2.6 lbs |
| Density | | Approx. 1.35 g/cm ³ | | | |
| Temperature resistance | | 22°F to 212°F (-30°C to 100°C) | | | |
| Intumescent activation | | Approx. 320°F (160°C) | | | |
| Expansion ratio (unrestricted) | | 1:40 | | | |
| Metal | | Steel with zinc coating | | | |
| Plastic | | ABS | | | |
| Fabric | | Glass-fiber | | | |

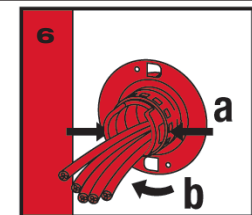
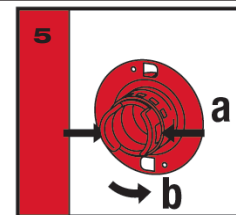
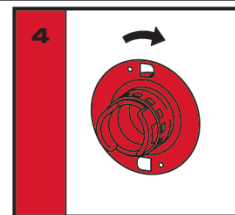
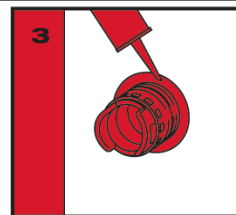
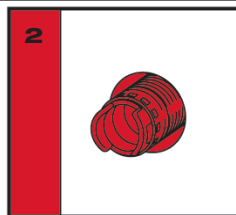
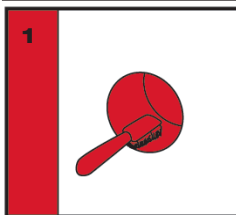
Approvals

| | |
|-------------------------------|-------------|
| California State Fire Marshal | In Progress |
| City of New York | In Progress |



Internationally tested and approved

Installation Instructions



Always refer to the MSDS before use and the UL Fire Resistance Directory or Hilti Firestop Systems Guide for complete installation information.

1. Use either a 2.5" or 4.5" hole saw to create the appropriate hole.
2. Insert the sleeve.
3. Seal the gap with firestop sealant to impede smoke and gas migration. Repeat on other side of the wall

4. Spin the flange clockwise onto the device. Repeat on other side of the wall.

5. To open the device:
 - (a) On one side of the wall, press the clip closures inward.
 - (b) Twist the device counterclockwise.

6. To close the device:
 - (a) On the same side of the wall, press the clip closures inward.
 - (b) Twist the device clockwise until finger-tight, allowing it to engage with a click.

For re-penetration of cables, repeat steps 5 & 6.

For installation options not presented here, consult your local Hilti representative for other rated firestop systems.

Hilti. Outperform. Outlast.

MSDS No.: 321
 Revision No.: 000
 Revision Date: 10/05/07
 Page: 1 of 2

Product name: CP 653 - Speed Sleeve
Description: Reusable Firestop Insert containing a black intumescent material
Supplier: Hilti, Inc. P.O. Box 21148, Tulsa, OK 74121
Emergency # (Chem-Trec.): 1 800 424 9300 (USA, PR, Virgin Islands, Canada); 001 703 527 3887 (other countries)

INGREDIENTS AND EXPOSURE LIMITS

Not applicable. This product is considered to be an "article" as defined in the federal OSHA Hazard Communication Standard 29 CFR 1910.1200 / 1926.59.

PHYSICAL DATA

| | | | |
|---------------------------------|---|-----------------------------|-----------------|
| Appearance: | Galvanized metal sleeve with red plastic ends | Odor: | None. |
| Vapor Density: (air = 1) | Not applicable. | Vapor Pressure: | Not applicable. |
| Boiling Point: | Not applicable. | VOC Content: | 7.6 g/l |
| Evaporation Rate: | Not applicable. | Solubility in Water: | Not determined. |
| Specific Gravity: | Not determined. | pH: | Not applicable. |

FIRE AND EXPLOSION HAZARD DATA

| | | | |
|--|---|--------------------------|-----------------|
| Flash Point: | Not applicable. | Flammable Limits: | Not applicable. |
| Extinguishing Media: | Use extinguishing media appropriate for surrounding fire. | | |
| Special Fire Fighting Procedures: | None known. | | |
| Unusual Fire and Explosion Hazards: | None known. Product serves as a firestop; intumescent material metal sleeve expands when exposed to temperatures > 160°C / 320°F. | | |

REACTIVITY DATA

| | | | |
|-----------------------------|-------------|----------------------------------|-----------------|
| Stability: | Stable. | Hazardous Polymerization: | Will not occur. |
| Incompatibility: | None known. | Decomposition Products: | None known. |
| Conditions to Avoid: | None known. | | |

HEALTH HAZARD DATA

| | | | |
|---|--|----------------------------|-------------|
| Known Hazards: | None known. | Routes of Exposure: | None known. |
| Signs and Symptoms of Exposure: | None expected from routine use/installation according to manufacturer's specifications and technical guides. | | |
| Carcinogenicity: | No ingredients are classified as a carcinogen by IARC, NTP or OSHA. | | |
| Medical Conditions Aggravated by Exposure: | None known. | | |

EMERGENCY AND FIRST AID PROCEDURES

| | |
|--------------------|---|
| Eyes: | Immediately flush with plenty of water. Call a physician if symptoms occur. |
| Skin: | Not applicable. Practice good hygiene; i.e. wash hands during breaks, before eating or smoking, and after work. |
| Inhalation: | Not applicable. |
| Ingestion: | Not a potential route of exposure. |
| Other: | Referral to a physician is recommended if there is any question about the seriousness of any injury/exposure. |



Hilti Firestop
 Saving Lives
 through innovation
 and education

Hilti. Outperform. Outlast.

MSDS No.: 321
 Revision No.: 000
 Revision Date: 10/05/07
 Page: 2 of 2

CONTROL MEASURES AND PERSONAL PROTECTIVE EQUIPMENT

Ventilation: General (natural or mechanically induced fresh air movements).

Eye Protection: Not required, however, safety glasses should be worn in most industrial settings.

Skin Protection: None required; however, gloves recommended.

Respiratory Protection: No respiratory protection is needed for normal application of this product.

PRECAUTIONS FOR SAFE HANDLING AND USE

Handling and Storing Precautions: Store in a cool dry area. Follow installation instructions.

Spill Procedures: No special requirements.

REGULATORY INFORMATION

Hazard Communication: This product is considered to be an "article" as defined in the federal OSHA Hazard Communication Standard.

DOT Shipping Name: Not regulated.

IATA / ICAO Shipping Name: Not regulated.

TSCA Inventory Status: Chemical components listed on TSCA inventory.

SARA Title III, Section 313: This product is classified as an "article" and is not subject to reporting under Section 313 of SARA Title III (40 CFR Part 372).

EPA Waste Code(s): Not regulated by EPA as a hazardous waste.

Waste Disposal Methods: Consult with regulatory agencies or your corporate personnel for disposal methods that comply with local, state, and federal safety, health and environmental regulations.

CONTACTS

Customer Service: 1 800 879 8000 **Technical Service:** 1 800 879 8000

Health / Safety: 1 800 879 6000 Jerry Metcalf (x6704)

Emergency # (Chem-Trec): 1 800 424 9300 (USA, PR, Virgin Islands, Canada); 001 703 527 3887 (other countries)

The information and recommendations contained herein are based upon data believed to be correct; however, no guarantee or warranty of any kind expressed or implied is made with respect to the information provided.



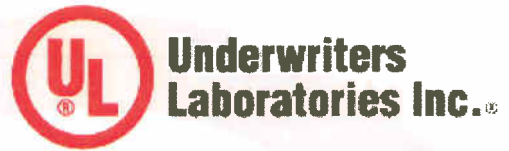
Hilti Firestop
 Saving Lives
 through innovation
 and education

Hilti. Outperform. Outlast.

Certificate of Compliance

Certificate Number 20071018-R15431
Report Reference 2007 October 18
Issue Date 2007 October 18

Page 1 of 1



Issued to: **Hilti, Inc.**
5400 S 122ND East Ave.
Tulsa, OK 74146 USA

*This is to certify that
representative samples of*


Firestop Devices & Firestop Certified for Canada

Have been investigated by Underwriters Laboratories Inc.® (UL) or any authorized licensee of UL in accordance with the Standard(s) indicated on this Certificate.

Standard(s) for Safety: ANSI/UL 1479 - Third Edition, CAN/ULC-S115-05

Additional Information: CP 653 Speed Sleeves for use in Through-Penetration Firestop Systems as currently described in the UL Fire Resistance Directory.

Only those products bearing the UL Classification Mark should be considered as being covered by UL's Classification and Follow-Up Service.

The UL Classification Mark includes: UL in a circle symbol:  with the word "CLASSIFIED" (as shown); a control number (may be alphanumeric) assigned by UL; a statement to indicate the extent of UL's evaluation of the product; and, the product category name (product identity) as indicated in the appropriate UL Directory.

Look for the UL Classification Mark on the product

Issued by:


Mona Couloute

Underwriters Laboratories Inc.

Reviewed by:


Steve Hoffman

Underwriters Laboratories Inc.