

CP 572 Smoke and Acoustic Spray

Applications

- Sealing construction joint openings in non fire-rated acoustical barriers and smoke partitions
(Not for use in fire-rated applications)

Advantages

- Quick and easy spray application
- Can be applied at low temperatures
- Good airborne sound insulation properties
- High elasticity for good movement absorption
- Excellent sprayability and low slump characteristics
- Paintable



Restricts smoke migration



Excellent sound insulation characteristics with application based testing in accordance with ASTM E 90.

Technical Data	CP 572
Color	white
Chemical basis	acrylic
Storage and transport temperature range	40°F to 77°F (5°C to 25°C)
Curing time approx. (73°F / 50% relative humidity)	approx. 3 mm / 3 days
Skin-forming time (73°F / 50% relative humidity)	approx. 15 min
Application temperature range	40°F to 104°F (5°C to 40°C)
Shelf life	12 months
Sound transmission classification (ASTM E90)	STC 54 (per tested construction type)
Surface burning characteristics (ASTM E84)	Flame spread: 10 Smoke development: 5
Movement capability	approx. 12.5%
Mold and mildew (ASTM G21)	mold resistant
Air leakage (Modified UL 2079 L-Rating)	L-Rating at Ambient = Less than 1 CFM / Lin Ft. L-Rating at 400°F = Less than 1 CFM / Lin Ft.

Description	Package Contents	Item No.
CP 572 smoke and acoustic spray (5 gallon pail)	1 pail	00412592



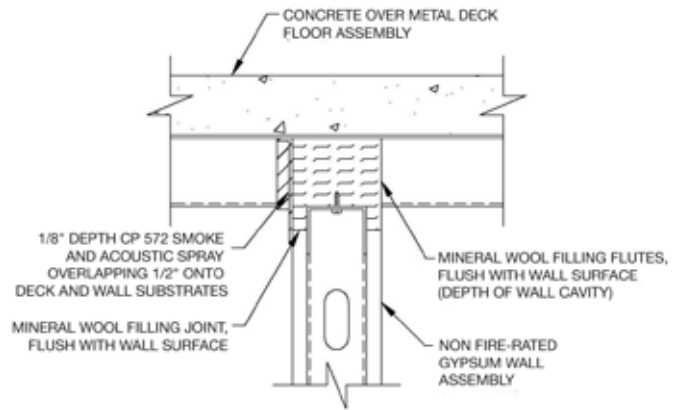
Hilti. Outperform. Outlast.

General guidelines for common acoustic seal applications

Note

- These are suggested installation guidelines for common applications
- Obtain architect and appropriate authority having jurisdiction approval for specific application of use prior to installation
- For additional details refer to specific Hilti sound transmission and air leakage test reports
- Not for use in fire-rated assemblies

Top of Wall (one sided installation)



System STC = 54
(refer to STC test report for wall construction details)

Installation instructions for CP 572

Notice

- Before handling, read Material Safety Data Sheet and product label for safe usage and health information.
- Instructions below are general guidelines — always refer to the product label, applicable product test reports and/or architect requirements.

Opening

1. Clean the opening. Surfaces to which CP 572 will be applied should be cleaned of loose debris, dirt, oil, wax, grease, and contaminants. The surface should be moisture and frost free.

Application of spray

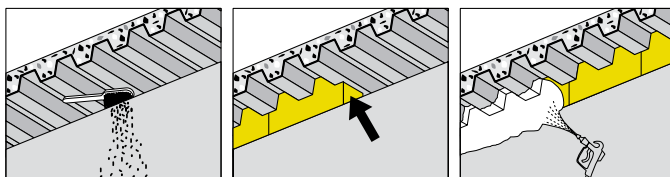
2. Install mineral wool backing to required depth
3. Application of spray: Apply CP 572 to the required depth in order to obtain desired sound rating. Make sure CP 572 contacts all surfaces and overlaps beyond all surrounding surfaces (Refer to test reports). Spray Tech Sprayers have been successful in applying CP 572 Smoke and Acoustic Spray. Hilti recommends the use of the Spray Tech EPX 2355 (for application temperatures above 50°F) or EPX 2555 Sprayers. CP 572 may also be brushed on with a paint brush

Not for use

- In areas underwater
- On hot surfaces (above 176°F)

Storage

- Store only in the original packaging at temperatures 40°F to 77°F (5°C to 25°C)
- Observe expiration date on package



1. Clean opening

2. Install mineral wool

3. Spray or brush on CP 572

Hilti. Outperform. Outlast.